



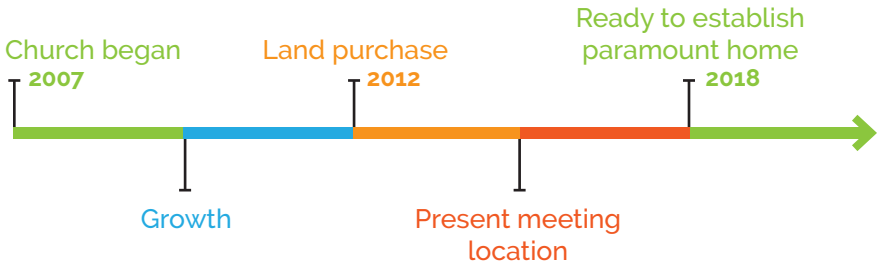
KNOW . GROW . GO

WALLENPAUPACK CHURCH

ADVANCE:
GAINING A HOME -
EXPANDING THE KINGDOM



OUR HISTORY TO THE PRESENT



FUTURE MINISTRY VISION

01 | For Our Congregation

- Unhindered, passionate worship of Jesus
- Growing in Christ through Biblical teaching
- Effective prayer that moves mountains
- Relevant discipleship for Middle and High School
- Engaging worship and activities geared for children

02 | To Our Community

- Practical help with food, clothing, education
- Participation in community events, efforts, causes
- Promoting the Gospel through relationships and services

03 | To Our World

- Add our support to joint worldwide missions
- Physically go to the field and assist as we can

04 | Expected Outcomes

- Grow our congregation to be able to serve more
- Acquire a permanent home in order to facilitate the ministry God has called us to

ADVANCE: GAINING A HOME - EXPANDING THE KINGDOM



ADVANCE | verb-move forward in a purposeful way

For 12 years, Wallenpaupack Church has been seeking God and serving the Wallenpaupack region. From serving meals to people in need, creating space for families to connect, and reaching out to teens with the gospel—we are ready to move forward.



GAINING A HOME

Establishing a permanent location will give us greater opportunities to minister to one another and the surrounding community. A home would allow us versatility in worship, prayer, and deep ministry. It will also give us a place to connect with one another and grow as a community.



EXPANDING THE KINGDOM

Great moves of God begin in the hearts of people. From our home base we will be able to resource the Wallenpaupack community, serve the hurting, and share the life-changing story of Jesus Christ. We will also have facility to train more leaders to expand the kingdom of God. This will be the epicenter of God's move in our region.

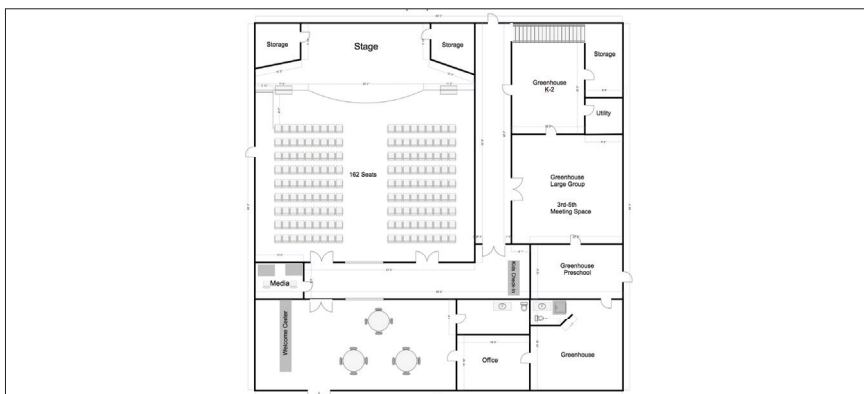




RENOVATE



* Note - exterior renovations may include (wall in large doors, signage, etc)



A second level may be added to include Middle School and High School space





AERIAL VIEW



FINANCIAL DETAILS

ANTICIPATED COST



- \$565,000** Asking price for building/land
- (\$100,000)** Sale of land owned by the church
- (\$250,000)** Campaign goal based on Feasibility Study projections

-
- \$215,000** Balance left of cost of buying property
 - \$100,000** Estimated cost of renovations
 - (\$30,000)** Cash in hand

\$285,000 Converted mortgage
(plus some accumulated interest)



ADVANCE IN GENEROSITY

01 | PRAY

Prayerfully review the information provided in this booklet

02 | CONSIDER

Capital Funds Campaign Details

- Many options for contributing, both cash and non-cash, will be presented and explained
- Commitment period will extend for three years so giving may be done over time
- Following commitments and gifts from the congregation, additional funding will be solicited beyond the church
- Additional fundraising events will be planned.

03 | COMMIT

Using your commitment card decide what you will give toward the campaign.

- Bring your completed commitment card to church and place it in the offering basket before October 31, 2018.
- **OR**, send your completed card to
PO Box 663, Hawley, PA 18428



PRAY FOR US!

- For God's guidance and favor
- For the financial resources needed
- For skilled labor to do what we can ourselves

SCRIPTURAL ENCOURAGEMENT

You must each decide in your heart how much to give.
And don't give reluctantly or in response to pressure.

“ For God loves a person who gives cheerfully.”
—2 Corinthians 9:7

A PRAYER TO OFFER TOGETHER

Father, you have been faithful to Wallenpaupack Church. Go ahead of us in this project and give us wisdom for what comes next. We will be faithful to your call and passionate in your work. Amen.



WALLENPAUPACK CHURCH
